



GAT MONTHLY MEMBERSHIP PROGRESS REPORT

Results as of: 4/30/2023

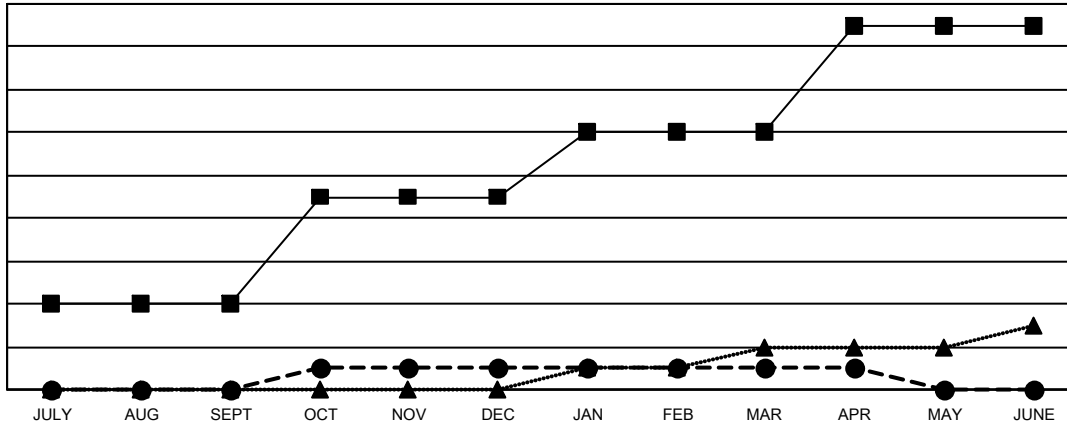
Multiple District 13

LOCATION: OHIO

Clubs			
RESULTS FOR 2022-2023			
QUARTER	NEW CLUB GOAL	NEW CLUBS	DROPPED CLUBS
JULY/AUG/SEPT	4	0	2
OCT/NOV/DEC	5	1	0
JAN/FEB/MAR	3	0	2
APR/MAY/JUNE	5	0	2

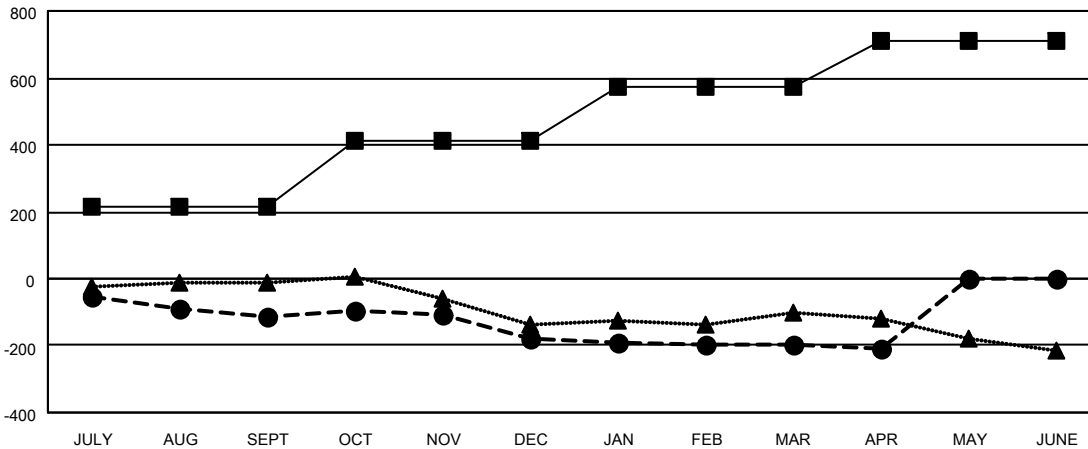
Members			
RESULTS FOR 2022-2023			
QUARTER	MEMBER GROWTH NET GOAL	MEMBER GROWTH ACTUAL	DROPPED MEMBERS ACTUAL (including transfers)
JULY/AUG/SEPT	215	141	240
OCT/NOV/DEC	196	242	293
JAN/FEB/MAR	160	233	216
APR/MAY/JUNE	142	82	85

GOALS AND ACTUAL NEW CLUBS CUMULATIVE



- CURRENT YEAR GOALS FOR NEW CLUBS
- CURRENT YEAR ACTUAL NEW CLUBS
- ▲- LAST YEAR ACTUAL NEW CLUBS

GOALS AND ACTUAL MEMBERS CUMULATIVE



- MEMBER GROWTH NET GOAL
- MEMBER GROWTH ACTUAL
- ▲- LAST YEAR MEMBERSHIP ACTUAL

DROPPED CLUBS: 6	193 CLUBS OF 368 ADDED 1 OR MORE NEW MEMBERS	GENDER DISTRIBUTION
DROPPED MEMBERS	CLICK HERE FOR CUMULATIVE MEMBERSHIP DATA	MALE 6,778 (68.44%)
DECEASED 155		FEMALE 3,111 (31.41%)
CLUB CANCELLED 0		NON BINARY 0 (0.00%)
OTHER 679		PREFER NOT TO ANSWER 14 (0.14%)
TOTAL 834		TOTAL FAMILY UNIT MEMBERS 2,059
		FAMILY MEMBERS PAYING HALF DUES 1,048